

# What's All the Buzz About?



An NGC Standard Flower Show  
Presented by the Kalamazoo Garden Council, Inc.  
Member of National Garden Clubs, Inc.  
Central Region, Michigan Garden Clubs, Inc.  
and District III

Wednesday, June 6, 2018

In concurrence with Michigan Garden Clubs State Convention  
At the Radisson Plaza Hotel at Kalamazoo Center  
100 West Michigan Avenue, Kalamazoo, MI 49007

Flower Show is free and open to the public from 2:00 pm - 6:00 pm

# *What's All The Buzz About?*

## TABLE OF CONTENTS

Flower Show Committee .....	1
NGC Purpose, MGC Mission.....	1
General Rules/Information .....	2
Timeline: Entry Placement & Judging Schedule .....	2
Judging and Award Information .....	3
Standard System of Awarding.....	3
Top Exhibitor Award Information .....	3-4
Division I: Horticulture	
Awards & General Requirements .....	5
Rules, Scale of Points .....	5
Classes .....	6-7
Division II: Design	
Awards & General Requirements .....	8
Rules, Scale of Points .....	8
Classes .....	9-10
Division III: Education	
Exhibits .....	11
Entry Card Instructions.....	11
Protected Native Plants List .....	12



**Kalamazoo Garden Council, Inc.** was created in 1946 as an umbrella organization to encompass the area garden clubs. Its purpose is to foster the education of members and the public in the areas of gardening, horticulture, botany, floral design, nature studies, environmental awareness, conservation and civic beautification.

**The following Garden Clubs are affiliated with the Kalamazoo Garden Council Inc.:**

Burke View, Chula Vista, Gardenettes, Grow and Show, Kalamazoo, Landscapers, Petal Pushers, Western Hills and Westwood Garden Clubs.

# ***What's All The Buzz About?***

## **2018 Flower Show Committee**

General Chair	Barb Smith	808-0155
Division I, Horticulture Chairs	Jan Keys	344-9234
	Becky Yaple	349-3494
Division II, Design Chair	Barb Smith	808-0155
Division III, Education Exhibits Chair	Carol Beckius	372-6950
President Kalamazoo Garden Council	Brenda Carl	344-5260
Awards / Ribbons	Rosemary Sillars	382-7673
Book of Evidence	Barb Smith	808-0155
	Chris Morgan	349-4227
Clerks	Cleora Mohny	327-7337
Design Entries & Consultants	Norma Stancati	382-0610
	Jerre Beattie-Ihrcke	343-5974
	Phyllis Straw	381-0393
	Sharon Yantis	599-1444
Design Classification	Chris Morgan	349-4227
Horticulture Classification Committee	Arleigh Smyrnois	375-8267
	Ann Miczulski	343-4990
Horticulture Entries Committee	Inge Mesik	685-9655
	Sue Corra	312-0104
Horticulture Placement Committee	Lorie Reed	375-2572
	Barb Winter	330-5015
Hospitality	Chris Morgan	349-4227
Judges	Norma Stancati	382-0610
Photography	Pat Pawlak	382-3023
	Lynn & Val Dinvald	343-3827
Properties	Mary Ann Laurell	375-7032
Publicity	Deb Harvey	327-3115
Staging & Floor Plan	Becky Yaple	349-3494
Schedule/Program Booklet Chm:	Phyllis Straw	381-0393
	Barb Smith	808-0155
	Evelyn Flynn	372-1047
	Jan Keys	344-9234
	Becky Yaple	349-3494
	Caroline Gray	370-8152
	Anna Mae Miller	349-5934
	Lorie Reed	375-2572
	Barb Winter	330-5015
	Sharon Yantis	599-1444
	Carol Beckius	372-6950
Signage	Lynn Dinvald	343-3827

### **Purpose of an NGC/MGC Flower Show**

To educate club members and the viewing public.  
 To stimulate interest in horticulture and floral design.  
 To provide an outlet for creative expression.  
 To convey NGC goals and objectives.



### **Michigan Garden Clubs, Inc., Mission Statement**

To provide education, resources and networking opportunities for its members to promote the love of gardening, floral design, and landscape design and civic and environmental responsibility.



## GENERAL RULES AND INFORMATION

1. This flower show conforms to the standards established by National Garden Clubs, Inc. (NGC), the 2017 edition of the *Handbook for Flower Shows* (HB) and the Handbook revisions printed in *The National Gardener Magazine* (TNG) which will be the authority for all issues not covered by the schedule, which is the **Law of the Show**.
2. The Flower Show is open to the public free of charge. All National Garden Club members and amateur gardeners may enter any or all sections of Horticulture and/or Design Division. Please enter by calling the appropriate division entries chair or consultant. **FRESH** plant material must be emphasized throughout the flower show.
3. All Design entries must be pre-registered.
4. Dates and times for placing all Entries and Exhibits are listed in the table below.

### Timeline: Entry Placement & Judging Schedule

*Flower Show Location: Radisson Plaza Hotel at Kalamazoo Center*

*Lower Level: The Prairies - Rooms IV & V*

*100 W. Michigan Avenue, Kalamazoo, MI 49007 -- Phone: (269-343-3333)*

Event	Day	Date	Time
Committee set-up and Staging	Tuesday	June 5	8:00 a.m. to 6:00 p.m.
Entries for Design	Tuesday	June 5	2:00-6:00 p.m.
	Wednesday	June 6	8:00-9:30 a.m.
Entries for Horticulture	Tuesday	June 5	2:00-6:00 p.m.
	Wednesday	June 6	8:00-9:30 a.m.
Entries for Education Exhibits	Tuesday	June 5	2:00-6:00 p.m.
	Wednesday	June 6	8:00-9:30 a.m.
Judges Brunch	Wednesday	June 6	10:00 a.m.
Judging	Wednesday	June 6	11:00 a.m. to 1:00 p.m.
Flower Show opens to the public	Wednesday	June 6	2:00-6:00 p.m.
Dismantle ( <i>Exhibitor's responsibility</i> )	Wednesday	June 6	6:00-7:00 p.m.

5. Entry cards are available from the Flower Show Committee listed on page 1, and on the day of the show.
6. Entry cards are to be filled out in advance and written in pencil. Address labels are permitted.
7. Exhibitors are required to bring a list of all entries with the required entry tag information on the day of the show.
8. The Horticulture Chairs and Design Classification Chair for each Division will check exhibits for conformity to the schedule prior to judging and before the exhibitor leaves the show area. Final determination for conformance is the judges' responsibility.
9. The General Chair and the Horticulture Chairs for each division are available during judging for possible consultation. They along with the judges and clerks are the only personnel allowed on the floor during judging.
10. The decisions of the judges are final. Awards may be withheld if not merited.
11. There must be an emphasis on **FRESH** plant material; no artificial plant material is permitted in any exhibit in any division.
12. Each exhibitor is limited to one entry per class, except in the horticulture division.
13. Michigan Garden Clubs, Inc., and the Flower Show Committee will strive to ensure the safety of all items after arrival and placement, but are not responsible for any loss or damage to exhibits.
14. Plants on the state's endangered or conservation plant list (page 12) must be grown by the exhibitor or collected in a legal manner and so identified if allowed.
- 15. Judging will begin promptly at 11:00 a.m., Wednesday, June 6, by NGC Accredited Judges.**
16. Exhibitors may not discuss exhibits with the Judges.
17. Exhibitors will be responsible for watering their entries and exhibits.
18. No entries may be removed prior to 6:00 p.m. on Wednesday, June 6, 2018.



## JUDGING AND AWARD INFORMATION

Judging will be done by accredited judges using National Garden Clubs' Standard System of Judging. Decision of the judges is final. Exhibitors may not discuss exhibits with the judges. Ribbons and Awards will only be awarded when merited and when all requirements are met (Revised 2017 HB, pg.39). Exhibitors are required to leave the exhibit area during the judging process. No one other than Judges, Clerks, Horticulture Chairs and Flower Show General Chair will be permitted in the area while judging is in progress. The General Chair and the Horticulture Chairs and Design Classification Chair must be available during all judging for possible consultations.

### Standard System of Awarding

The NGC Standard system of Awarding is used in all divisions.

Only one first place (blue) ribbon may be awarded per class or subclass; must score 90 points or more.

Only one second-place (red) ribbon per class or subclass; must score 85 points or more.

Only one third-place (yellow) ribbon per class or subclass; must score 80 points or more.

One (1) or more honorable mention (white) ribbons, as merited; must score 75 points or more.

All blue ribbon-winning exhibits must be signed and dated by an NGC Accredited Judge. All non-blue ribbon exhibits scoring 90+ points must be stated on the entry card, signed and dated by an NGC Accredited Judge. All other entries must be initialed by an NGC Accredited Judge or Student Judge. The Standard System of Judging allows: One Blue ribbon must score 95 or above to be eligible for any Top NGC Exhibitor Award. Horticulture Entries must be identified by their binomial names or currently acceptable scientific designation.

Top Exhibitor Awards recognize outstanding exhibitor achievement above and beyond ribbons in the Standard System of Awarding. Top Exhibitor Awards are available for each division in a Standard Flower Show. Eligible exhibits must be a blue ribbon winner scoring 95 points or more. Awards may be withheld if not merited. Any specimen that scores 95 points or more is eligible for a Top Exhibitor Award. (See Revised 2017 HB, pg. 39)

### TOP EXHIBITOR AWARDS

#### **DIVISION I - HORTICULTURE: Top Exhibitor Awards** (Revised 2017 HB, pg. 40)

*Top Exhibitor Award: No minimum number of exhibits is required per class.*

<b><u>NGC Award of Horticulture Excellence</u></b> One (1) award may be offered and awarded to the highest scoring exhibit in the entire Horticulture Division entered by a single exhibitor, provided all Horticulture Award Requirements have been met. Participating judges for this division will receive a <u>paper ballot</u> to cast their individual vote for the Award of Horticulture Excellence. Rosette of green, orange and blue ribbons.	
<b><u>NGC Award of Merit</u></b> Two (2) awards are offered in not more than two Sections with a common characteristic that are designated in the schedule. This may include all cut non-woody specimens including vines Rosette of orange ribbons.	One in Section A One in Section B
<b><u>NGC Arboreal Award</u></b> One (1) is awarded to the highest scoring exhibit if eligible sections/classes are designated in the schedule and all other General and Horticulture Award Requirements have been met for each award offered. Eligible section/s must consist of cut tree and/or shrubs and branches (cut portions of vines are not eligible). Cut specimens must be no more than 30" in length, include an apical tip, central leader and several nodes. Rosette of green ribbons in two shades.	One in Section C
<b><u>Grower's Choice Award</u></b> Two (2) awards are offered to the highest scoring exhibits if eligible sections/classes are designated in the schedule and all other General and Horticulture Award Requirements have been met. Classes in each eligible Section must have some common characteristic, e.g., Flowering Container Grown, Foliage Container Grown and/or Combination Planting. Rosette of dark green ribbons.	One in Section D One in Section E

## JUDGING AND AWARD INFORMATION *(continued)*

### TOP EXHIBITOR AWARDS

#### **DIVISION II - DESIGN: Top Exhibitor Awards** (Revised 2017 HB, pg. 42)

*Top Exhibitor Award: A minimum of 3 classes with at least 4 entries in each class*

<b><u>Award of Design Excellence</u></b> This award may be offered to the highest scoring design exhibit in the entire Design Division scoring 95 points or more. Participating judges for this division will receive a <u>paper ballot</u> to place their individual vote for the Award of Design Excellence. Rosette of gold ribbons.	
<b><u>NGC Designer's Choice Award</u></b> This award is offered to the highest scoring design exhibit within a section of classes consisting of designs in which the designer has complete freedom in selection of components but must include some plant material. Plant material may be dried, treated dried and/or all fresh. Rosette of brown purple ribbons.	One in Section A
<b><u>Kalamazoo Garden Council Novice Award</u></b> Open to exhibitors who <i>have not</i> previously won a Blue Ribbon in a flower show. This award may be offered to the highest scoring design exhibit scoring 95 or above. Rosette of yellow ribbons.	One in Section B
<b><u>NGC Petite Award</u></b> This award is offered to the highest scoring design exhibit within a section of classes consisting of a design ranging from 3 to 12 inches. Schedule to determine height, width or depth. Small rosette of blue and white ribbons.	One in Section C
<b><u>NGC Table Artistry Award</u></b> This is offered to the highest scoring design exhibit within a section of classes consisting of all Functional Tables, Exhibition Tables or a combination of both. Designer has complete freedom in selection of plant material. Rosette of burgundy ribbons.	One in Section D

#### **DIVISION III: EDUCATION**

*An NGC Recognition Award*

<b><u>Award of Appreciation</u></b> A non-competitive award determined by the show committee if merited. No limit to the number offered and placed. Rosette of orchid ribbons.	Section A
---	-----------

# DIVISION I – HORTICULTURE

## Awards and General Requirements

1. The NGC exhibit policies are printed in the *Handbook for Flower Shows*, Chapter 6, exhibiting in the horticulture division.
2. Exhibits must be a Blue Ribbon Scoring 95 or above to win a National Garden Clubs, Inc. Top Exhibitor Award.
3. An award must be withheld if none of the exhibits designated in the schedule meet specific requirements.

### Horticulture Rules

1. The rules for a single species cut or container-grown specimen(s) are listed in the *Handbook for Flower Shows*.
2. In order to receive an NGC Top Exhibitor Award, the exhibitor must identify his/her entry by its binomial name or currently accepted scientific designation. If the plant is a hybrid, the cultivar name is added, if known. If the plant is a variety within a species, the variety's name should be added if known. (HB Chapter 6)
3. Entry cards are to be filled out in advance if possible. Entry cards are available from the Flower Show Committee. They should be written in pencil. Address labels are permitted.
4. Cut specimens should be clean with all debris, dirt and damage removed by the exhibitor. Cut specimens should not have foliage below the water line.
5. If a plant is considered a flowering plant, it should be exhibited as a flowering specimen. Foliage plants may flower, but should be exhibited as foliage plants if they are grown for their leaves.
6. Specimens with a class designation in the schedule may not be entered in the 'Any other worthy specimen' class.
7. The Horticulture Chairs and/or General Show Chair are free to subdivide classes by color, form size, cultivar, variety or other distinguishing characteristics. Horticulture Chairs will check all entries for conformity. The Horticulture Chairs have the right to remove any exhibit in wilted condition during the show.
8. Containers may be provided by the exhibitor or may be obtained from the Flower Show Committee at registration. Cut specimens are exhibited in clean, transparent containers. They do not have to be colorless if stems are clearly visible. Containers should be free from lettering, labels, or distracting pattern. Containers may include vases or bottles in pleasing proportion to the specimens. The Flower Show Committee will not be responsible for the safe return of containers. Unobtrusive glass marbles or pebbles may be used as ballast but not as wedging. Plant material may be wedged using clear plastic wrap, furnished by the Flower Show committee.
9. All exhibits must be **FRESH**. All exhibits must have been grown by the exhibitor.
10. Container grown plants may be double potted; inner pot must not be visible.
11. Plant material must be in its natural state and may not be altered by application (treatment) of oil, commercial "shine" products, etc. that change the natural appearance. No wiring of specimens is permitted.
12. Only foliage and/or flowers naturally grown and still attached to the specimen are permitted in the flower show. Unattached foliage is never included with a cut bloom specimen.
13. All container Grown Plants must have been in the Exhibitor's possession for no fewer than 90 days. Combination plantings must have been grown together no fewer than six weeks. Perennials (Herbaceous), Biennials and Houseplants no fewer than 90 days; Combination Plantings no fewer than 6 weeks; Arboreal(s) (Woody Ornamentals) no fewer than 6 months.

### Horticulture Scale of Points

(See *Handbook for Flower Shows*, Revised 2017 Chapter 14 for complete details)

All Cut or Container-Grown Horticulture Specimens and Collections (Arboreal, Flowering, Foliage, Fruit/Vegetables/Nuts)	Combination Plantings and Gardens (Foliage or Flowering)
Conformance.....5	Conformance.....5
Plant Identification.....5	Plant Identification.....5
Peak of Perfection.....75	Labeling.....5
Form.....20	Peak of Perfection.....35
Color.....20	Form.....10
Maturity/Size.....20	Color.....10
Condition/Blemishes.....15	Condition.....10
Grooming.....10	Show-worthy Size.....5
Staging.....5	Overall Effect.....30
<b>Total Score.....100</b>	Creative/Distinctive.....5
	Grooming.....10
	Staging.....5
	<b>Total Score.....100</b>

## DIVISION I – HORTICULTURE

### “BOUNTIFUL BEAUTIFUL B...EES”



**AWARD OF EXCELLENCE** may be awarded to an exhibit by a single exhibitor judged finest in the entire Horticulture Division, provided all General and Horticulture requirements have been met. Only botanically named specimens are eligible.

#### SECTION A: PERENNIALS AND BIENNIALS - “BLOOMS”

Entries must consist of one stem or one spray or one spike, depending on the growth pattern of the plant. Botanically named specimens are eligible for the **AWARD OF MERIT** (Revised 2017 HB, pg.41).

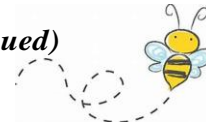
- Class
1. *Alchemilla* (Lady's Mantle)
  2. *Aquilegia* (Columbine)
  3. *Aruncus* (Goatsbeard)
  4. *Baptisia* (False Indigo)
  5. *Campanula* (Bellflower)
  6. *Clematis*
  7. *Corydalis*
  8. *Dianthus* (Pinks)
  9. *Dicentra* (Bleeding Heart)
  10. *Digitalis* (Foxglove)
  11. *Gaura lindheimeri* (Lindheimer's beeblossom)
  12. *Geranium* (Hardy Geranium)
  13. *Heuchera* (Coral Bells)
  14. *Iris*
    14. a. Tall Bearded
    14. b. Beardless
  15. *Nepeta* (Catmint)
  16. *Penstemon* (Beardtongue)
  17. *Paeonia* (Peony)
    17. a. Single
    17. b. Double
    17. c. Any other worthy specimen
  18. *Rosa* (Rose) (*Minimum of two leaves, stem length in proportion to bloom*)
  19. *Salvia*
  20. *Viola* (Pansy)
  21. Any other worthy specimen

#### SECTION B - FOLIAGE PLANTS - “BLADES”

Botanically named specimens are eligible for the **AWARD OF MERIT** (Revised 2017 HB, pg.41).

- Class
22. *Begonia*
  23. Ferns
  24. *Helleborus*
  25. Herbs
  26. *Heuchera*
  27. *Hosta* (one blade with stem, *measured by leaf width*)
    27. a. Large – one leaf (from 6” and above)
    27. b. Medium – two leaves (from 3” up to 6” across)
    27. c. Small – two leaves (up to 3” across)
    27. d. Miniature – three leaves (under 3” across)
  28. Any other worthy specimen

**DIVISION I – HORTICULTURE** *(continued)*  
**“BOUNTIFUL BEAUTIFUL B...EES”**



**SECTION C - ARBOREAL – “BRANCHES”**

Branches must be a minimum of 18 inches in length and not to exceed 30 inches in length. Apical end and several nodes must be present. Botanically named specimens are eligible for the

**ARBOREAL AWARD** (Revised 2017 HB, pg.40).

- Class    29. Deciduous Branches – No Flowers  
            30. Evergreen Branches – Broadleaf Tree or Shrub  
            31. Evergreen Branches – Needled Tree or Shrub  
            32. Flowering Branches

**SECTION D - CONTAINER GROWN PLANTS - “BELLES”**

A single species grown in a container. More than one plant of the same cultivar and color may be exhibited in the container. Maximum size of container: 14 inches in diameter. May be double potted; inner pot must not be visible. Botanically named specimens are eligible for the

**GROWER’S CHOICE AWARD** (Revised 2017 HB, pg.41).

- Class    33. Hardy plants grown primarily for flowers (MUST be in bloom)  
            34. Hardy plants grown primarily for foliage (MAY be in bloom)  
            35. House plants grown primarily for flowers (MUST be in bloom)  
            36. House plants grown primarily for foliage (MAY be in bloom)  
            37. Succulents

**SECTION E - COMBINATION PLANTINGS - “BLENDS”**

A grouping of three or more botanically different plants with similar cultural requirements, such as light, water, and humidity. Naturalistic accessories are permitted but must be in scale with plantings and container, and theme appropriate to the container. Maximum size of container: 16 inches in diameter. Botanically named specimens are eligible for the

**GROWER'S CHOICE AWARD** (Revised 2017 HB, pg.41).

- Class    38. Herbs  
            39. Succulents  
            40. Mixed foliage and flowering plants  
            41. Any other worthy combination planting

## DIVISION II – DESIGN

### Awards and General Requirements

1. The NGC exhibit policies are printed in the *Handbook for Flower Shows*, Chapter 7, exhibiting in the Design division.
2. Exhibit must be a Blue Ribbon winner, scoring 95 or above to win a National Garden Clubs, Inc. Top Exhibitor Award.
3. There must be a minimum of 3 classes with at least 4 entries in each class.
4. No section may be eligible for more than one Top Exhibitor Design Award.

### Design Rules

1. The NGC exhibit policies are printed in the *Handbook for Flower Shows*, Chapter 7, exhibiting in the Design Division, NGC policies and guidelines.
2. **Advance registration with the Design Consultant is required by June 1.**
3. Plant material and non-plant material permitted and not permitted in the Design Division are printed in the *Handbook for Flower Shows*, Chapter 7.
4. All plant material used in the design must be identified on a 3x5 card, neatly typed or printed provided by the exhibitor and included with every entry tag. Though binominal names are not required, they are encouraged for educational purposes. Each 3x5 card may include explanation of design.
5. The exhibitor is required to conform to the stated descriptions of the design type if named in the class (See *Handbook for Flower Shows*, Chapter 7, rules for design types, table designs).
6. Rules for design types, advanced design types, table designs and table appointments are printed in the *Handbook for Flower Shows*, Chapter 7.
7. All design work must be the work of the exhibitor and the design must have not been previously entered or judged in an NGC Standard Flower Show.
8. All classes are open to any Michigan Garden Clubs, Inc. member.
9. An exhibitor may enter multiple classes within the Design Division, but only one exhibit per class.
10. Plant material need not be grown by the exhibitor.
11. No artificial flowers, fruit, or foliage is allowed.
12. Fresh plant material must never be treated.
13. Some plant material must be used in every design.
14. Living members of the animal kingdom, e.g., mammals, birds, fish, etc., and taxidermal representation of the same, are not permitted in a Standard Flower Show.
15. The official American flag and other national flags are not permitted to be used within any design in a Standard Flower Show. The use of any flag as an underlay, background, skirting, draping, etc. is also prohibited throughout all divisions of the Standard Flower Show.
16. Religious symbols used must be displayed in a respectful manner.
17. Landscapes or scenes are not permitted in the design division.
18. If the designer is unable to fulfill the assignment, it is the designer's responsibility to provide a substitute.

#### All Designs Scale of Points

(See *Handbook for Flower Shows, Revised 2017*  
Chapter 14 for complete details)

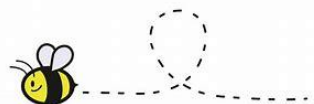
Conformance	
To Type.....	7
To Schedule Requirements.....	7
Design Principles.....	48
Section of Components.....	8
Organization of Components.....	8
Expression.....	8
Distinction.....	<u>14</u>
<b>Total Score.....</b>	<b>100</b>



## DIVISION II – DESIGN

### “IT’S ALL ABOUT THE BIRDS AND THE BEES”

All design entries require advance registration; to advance register a design entry, call the Consultant listed under the desired section. The Award of Design Excellence may be offered and awarded to an exhibit entered by a single exhibitor and judged finest in the entire Design Division, provided all general and design award requirements are met.



#### SECTION A: “FLIGHT PATTERNS”

*Consultant: Phyllis Straw Phone: (269)381-0393*

Entries eligible for the DESIGNER’S CHOICE AWARD. Designer has complete freedom in selection of all design components.

**CLASS 1: “FLIGHT OF THE BUMBLEBEE” (4 Exhibits)**

A Multi-Rhythmic Design staged on a gray cube 24” x 24” x 24” placed on the floor. No height limitations. To be judged from the front.

**2: “HOVERING AROUND” (4 Exhibits)**

A Framed Spatial Design staged within an 18” wide and 24” tall black wood frame placed on a table in front of a neutral (ecru) wall. Frame to be provided by the committee. Designer to furnish hanging mechanics.

**3: “TALES OF MIGRATION” (4 Exhibits)**

A Creative Line Design staged on a 40” high black pedestal with a 14” square top. To be judged from all sides. No height limitations.

#### SECTION B: “LEARNING TO FLY”

*Consultant: Sharon Yantis Phone: (269)599-1444*

Entries eligible for the Kalamazoo Garden Council NOVICE AWARD. Entrants restricted to those never having won a blue ribbon in a Standard Flower show.

**CLASS 4: “FLEDGLING” (4 Exhibits)**

An American Traditional Line Design placed on one half of an 8 foot long by 30 inch wide, skirted black table. Designer to provide a background panel to be placed behind the design.



**DIVISION II – DESIGN** *(continued)*  
**“IT’S ALL ABOUT THE BIRDS AND THE BEES”**



**SECTION C: “POWER TO THE POLLINATORS”**

Consultant: Jerre Beattie-Ihrcke Phone: (269)343-5974

Entries in this section will be eligible for the PETITE AWARD. Classes 5 and 6 will be staged on a set of shallow steps placed on an eight foot table. Class 7 entries will be staged on the remaining space of the same table.

**CLASS 5: “SNUG AS A BUG” (4 Exhibits)**

A Petite Design not to exceed 3” in height, width or depth. To be staged on a black platform.

**6: “THE BEES’ KNEES” (4 Exhibits)**

A Petite Design not to exceed 5” in height, width or depth. To be staged on a black platform.

**7: “THE BATS’ BELLS” (4 Exhibits)**

A Petite Framed Spatial Design (a Creative Design organized as a single unit suspended in a frame) that incorporates a bell (provided by the designer). Design to be staged within a black metal frame provided by committee with an open area measuring 2.5” wide and 5” tall. Design may not exceed the height or width of the frame but may exceed its depth. Design may be attached to the frame at more than one point but appears suspended within it. The metal frame will include a small ring at the top. Designer must provide hanging material.

**SECTION D: “BUTTERFLIES ARE FREE”**

Consultant: Norma Stancati Phone: (269)382-0610

Entries eligible for the TABLE ARTISTRY AWARD. All classes permit designer’s choice of fresh and/or dried material and other components.

**CLASS 8: “SOCIAL BUTTERFLY” (4 Exhibits)**

A functional informal lunch for two, staged on a 36” round table. Designer to provide table covering.

**9: “MADAME BUTTERFLY” (4 Exhibits)**

A functional buffet table for an afternoon tea for four or more staged on a 70.5” long by 24” deep, marble-topped table. Designer may provide additional table covering if desired.

**10: “BEYOND THE BLOOMS” (4 Exhibits)**

An Alfresco supper for two staged on a 6 foot x 6 foot piece of green outdoor carpet placed on the floor. Carpet will be provided.

# DIVISION III - EDUCATION

## "BEE SMART ...BEE KNOWLEDGEABLE"

### SECTION A – "BEE-ING SMART WON'T STING"

Consultant: Carol Beckius Phone: (269)372-6950

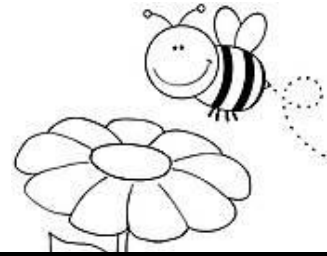
Exhibits designed to inform / instruct the public in some of the National Garden clubs, Inc. objectives. An Exhibit must occupy a minimum of eighteen (18) square feet of surface area. Exhibit to be staged on an 8 foot long by 30 inch wide table. Table covering provided by the exhibitor. Eligible for the AWARD of APPRECIATION (Revised 2017 HB, pg.40).

#### CLASS 1.

Exhibit 1. "Bees Meant to Please"

Exhibit 2. "Hungry, Hungry Hummers"

Exhibit 3. "Fluttering Butterflies"



National Garden Clubs, Inc.			
What's All the Buzz About			6/6/2018
FLOWER SHOW			DATE
DIVISION	SECTION	CLASS No.	ENTRY No.
I	A	10	**
<b>Digitalis 'BuzzBee'</b>			
VARIETY OR CLASS NAME			
EXHIBITOR			
Earl E. Bird			
ADDRESS			
718 Flower Lane			
CLUB			
The Jolly Garden Club			
1st	2nd	3rd	Honorable Mention
EXHIBIT SCORED 90+			
EXHIBITOR			
Earl E. Bird			
ADDRESS			
718 Flower Lane			
CLUB			
The Jolly Garden Club			
DIVISION	SECTION	CLASS No.	ENTRY No.
I	A	10	**
<b>Digitalis 'BuzzBee'</b>			
VARIETY OR CLASS NAME			

### Entry Cards Instructions (use pencil only)

Flower Show Name / Date

**\*Division:** Horticulture or Design

**\*Section:** Perennial, Foliage Plants, etc.

**\*Class Number:** See schedule

**\*\*Your assigned Entry Number**

**Provide:** Binomial name: Genus, species

e.g. *Lillium longiflorum*. If the plant is a hybrid, the cultivar name is added, e.g. *Lillium longiflorum* 'Casa Rosa'

Your name

Your address and

Your garden club name

Address labels may be used. Need not be a member of a garden club to exhibit.

\*Division, Section and Class Number are all found in the Flower Show Schedule along with botanical names.

\*\* Entry Number is assigned by Horticulture Entries Committee or contact the Design Consultant.

## PROTECTED MICHIGAN NATIVE PLANTS

The following plants are only permitted if grown by the Exhibitor and/or obtained in a legal manner and **must be so marked.**

### State of Michigan

#### DEPARTMENT OF NATURAL RESOURCES

The current list, effective April 9, 2009, is extensive and far too lengthy to list here. Please go to the below ULR which contains the list of Endangered (E), Threatened (T), and Probably Extirpated (X) plant species of Michigan, which are protected under the Endangered Species Act of the State of Michigan (Part 365 of PA 451, 1994 Michigan Natural Resources and Environmental Protection Act). The current list was compiled by technical advisors to the Michigan Department of Natural Resources and the citizenry of the state. In addition the Invasive and Noxious plant list is also listed using this URL link:  
[http://mnfi.anr.msu.edu/data/special\\_plants\\_list.pdf](http://mnfi.anr.msu.edu/data/special_plants_list.pdf)

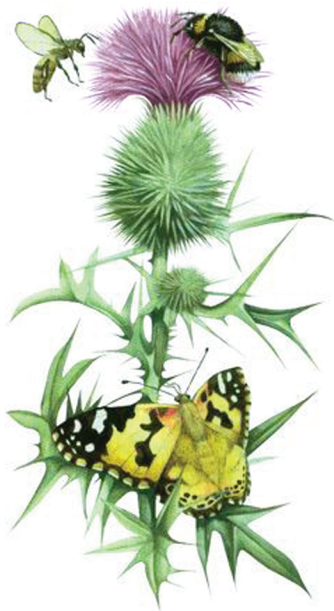
### WILDFLOWERS PROTECTED BY REQUEST OF MICHIGAN GARDEN CLUBS

<u>Botanical Name</u>	<u>Common Name</u>
<i>Aquilegia canadensis</i>	Wild Columbine
<i>Arisaema</i> sp.	Jack-in-the-Pulpit
<i>Caltha palustris</i>	Cowslip 'Marsh Marigold'
<i>Celastrus scandens</i>	Climbing Bittersweet
<i>Chimaphila umbellata</i>	Pipsissewa 'Prince's Pine'
<i>Claytonia virginica</i>	Spring Beauty
<i>Clintonia borealis</i>	Spotted Wood Lily
<i>Cornus florida</i>	Flowering Dogwood
<i>Epigaea repens</i>	Trailing Arbutus
<i>Erythronium americanum</i>	Adder's Tongue 'Trout Lily'
<i>Ilex species</i>	Michigan Holly
<i>Lilium michiganense</i>	Michigan Lilly
<i>Lilium superbum</i>	Turk's Cap Lilly
<i>Lobelia cardinalis</i>	Cardinal Flower
<i>Sanguinaria canadensis</i>	Bloodroot
<i>Nelumbo lutea</i> (Willd)	American Lotus
<i>Monotropa uniflora</i>	Indian Pipe
<i>Sarracenia purpurea</i> f. <i>heterophylla</i>	Pitcher Plant

*Note: Purple Loosestrife, Lythrum salicaria, is an outlawed plant. All native club mosses, gentians sp., orchids and trilliums are protected plants.*



# Thank You



The Flower Show Committee  
would like to recognize  
**LYNN DINVALD**  
for her expert contribution to  
this Flower Show Schedule.

